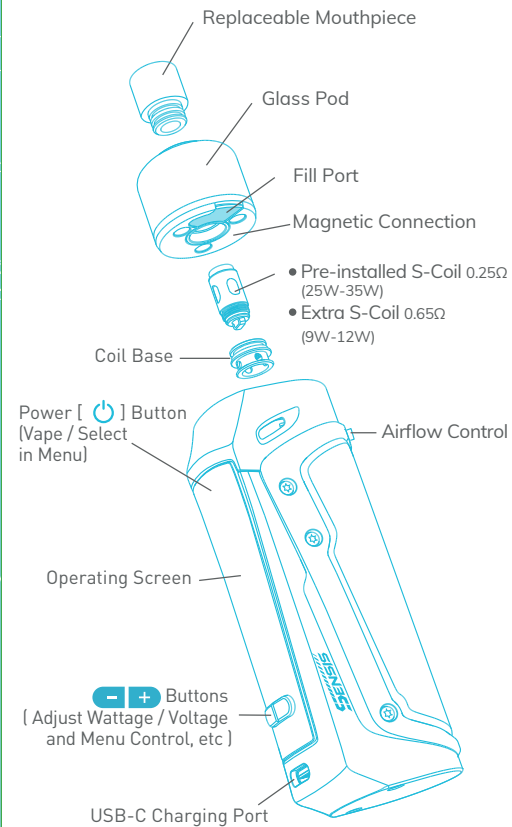


# SENSIS

Here's a quick guide on how to use your new device.

INNOKIN



## How to Use

1. Fill the Sensis Glass pod.

### How to Fill

- Pull black tab to open.
- Fill with eliquid.
- Reinsert tab.
- Do not overfill.



### IMPORTANT:

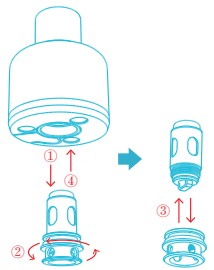
Wait 5 minutes for new coil to prime before vaping.

2. Connect pod to device.
3. Adjust airflow control to your preferred setting.
4. Power on the device. Select output mode.
5. Vape & Enjoy!

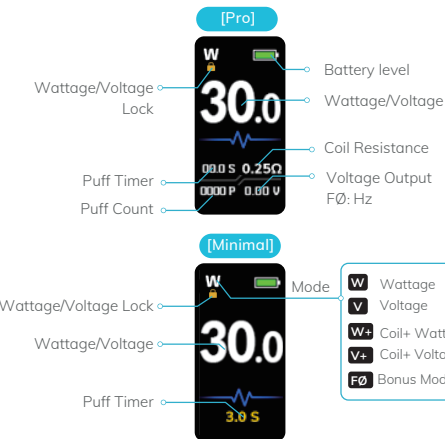
## How to Change Coil

IMPORTANT: MAKE SURE THE POD IS EMPTY BEFORE CHANGING COIL.

1. Pull to remove coil base and coil.
2. Untighten and remove used coil and dispose of it safely.
3. Tighten new coil into coil base.
4. Reinsert coil base and coil.

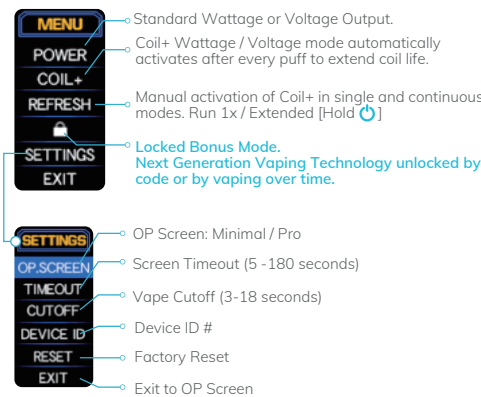


## Operating Screen

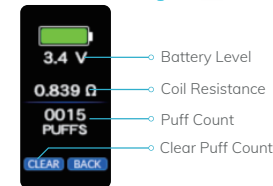


## Device Control

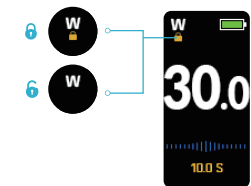
1. Access Menu: Hold + - at the same time



2. Secondary Screen: + + at the same time

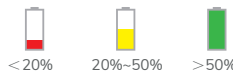


3. Wattage / Voltage Lock / Unlock + - at the same time



## Charging & Safety

- Gently insert TYPE-C USB cable correctly.
- Charge with a certified 5V wall charger and included TYPE-C USB cable.
- Do not leave device charging unattended.
- Do not store Sensis on an empty battery.
- Keep at least 1/2 charged when not in use.
- Always check coils for recommended wattage range.



## Important

- If you have a pacemaker, please seek advice from your doctor before using this device.
- Keep contacts clean of debris / eliquid.
- Keep tank at least 1/3 full for best longevity and flavors.
- Do not vape if tank is empty.
- If there is a burnt taste, replace coil immediately.
- Replace coil when there is a reduction in flavour or vapour.

## Protections

When the battery voltage is lower than 2.7V, the device will not power on.



LOW BATTERY Warning is displayed when battery voltage is lower than 3.3V. Battery voltage is shown on the secondary screen.  
**Solution:** Charge the device.



CHECK COIL Warning is displayed when the tank/pod/coil is not connected properly or the coil resistance is not supported (<0.2 / >3.5).  
**Solution:** Check the connection and reconnect the tank/pod or replace the coil.



VAPE CUTOFF Warning is displayed when the Puff time exceeds the set Vape Cutoff time.  
**Solution:** Vape Cutoff time is set through the Menu.



OVERHEAT Warning is displayed when the PCB Temperature exceeds 90C. Output is disabled until the PCB returns to a safe operating temperature.



ATOMIZER SHORT Warning is displayed when there is a short-circuit in the coil and output is disabled.  
**Solution:** Check the tank/coil and replace the coil.



LOW RES Warning is displayed and output is disabled when the coil resistance is <0.2.  
**Solution:** Check the tank/coil and replace the coil.

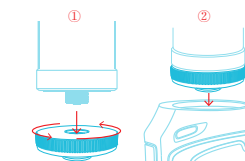
## Automatic Screen Timeout:

The display will power off according to the TIMEOUT set in the Menu. To reactivate, press any button or connect a powered Type-C USB cable.

## Automatic Wattage Decrease:

When the battery power is low, the device will automatically reduce the output wattage. Please recharge the device to continue vaping.

## How to Use Sensis 510 Adapter



Attach the Sensis 510 Adapter to vape 510 tanks and coils. Remove the Adapter with an attached tank.

## Specifications

Device Dimensions	121*40*30mm
Tank Capacity	3.1ml / 2 ml
Battery mAh	3000 mAh
Minimum / Maximum Wattage	6.0W-40W
Charging Current	DC5.0V/1.7A

## Sceptre / S-Coil Types

Coil	Recommended Wattage	Recommended Vape Style	Materials
S-Coil 0.25Ω	25-35W	RDL	KAL Mesh + Seaweed fibre cotton
Sceptre 1.2Ω	8-9.5W	MTL	NI-CR
Sceptre 0.5Ω	18-20W	RDL	KAL Mesh
Sceptre 0.65Ω	9-12W	MTL	KAL

[ F ] I N D  
CAN YOU FIND ?

- facebook.com/Innokin.Technology
- instagram.com/innokintechnology
- twitter.com/innokintech
- reddit.com/r/innokin
- support@innokin.com

